

YOUR STEP-BY-STEP INSTRUCTIONS

What's included in your kit:

1x fitted ring
1x plain ring
1x self adhesive PVC panel
1x finishing tool
Double sided tape
Step-by-step instruction

What will you also need:

Your choice of fabric
Iron
Scissors
Tape measure
Pencil
Mod-pod



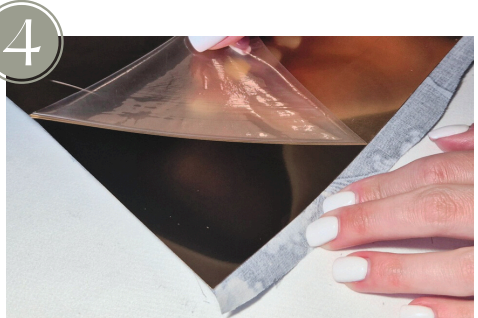
Iron your fabric to remove any wrinkles. This helps fabric stick smoothly to the PVC panel and gives professional look to the lampshade.



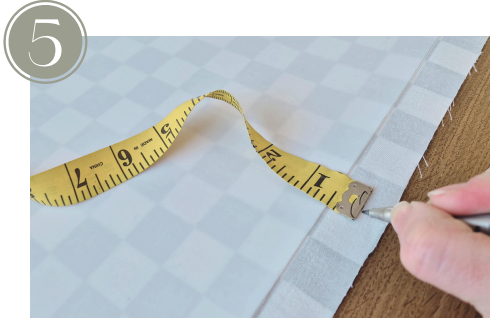
Lay your fabric **face-down** on your workspace. Position the self-adhesive styrene backing on top. Slowly peel away the protective film while pressing the sticky side of styrene onto the fabric.



Press the panel onto the fabric, smoothing it to avoid bubbles or wrinkles.



If you have **GOLD PVC panel**, then you need to remove protective film from the golden side as well. Avoid smudging. Skip this step if you have **WHITE PVC panel**.

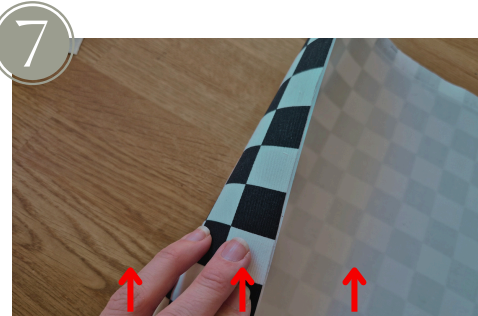


Using a pencil, mark a **0,6 inch** seam allowance along:

- **Both long edges**
- **One of the short edges**



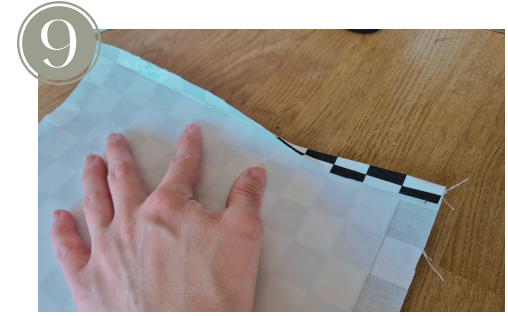
Trim the fabric along your pencil lines. Make sure you have 0,6 inch seam allowance on three sides and **none on one** of the shorter edges.



The **unmarked shorter edge does NOT need** a seam allowance. Cut the fabric to align exactly with the edge of the PVC panel or little shorter.



Move back to the shorter edge with seam allowance. Use the double-sided **WHITE** tape to secure the **shorter edge PVC**.

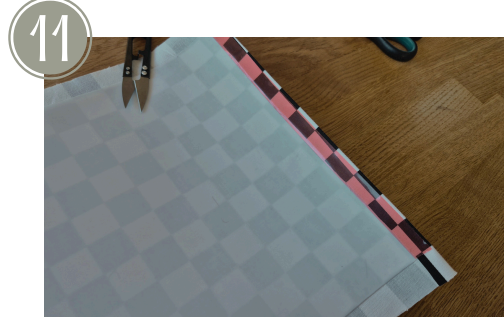


Peel off the liner of the white tape to expose adhesive. Fold the fabric back and secure.

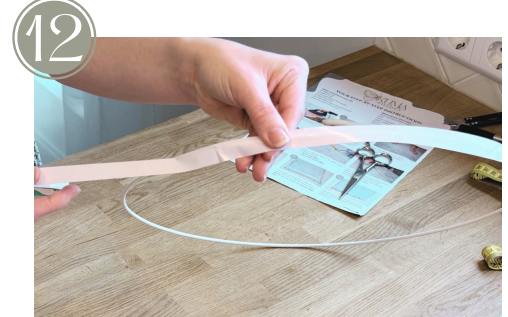




Where the fabric overlaps, cut away **inner excess fabric** to avoid bunching. Repeat on the other side.



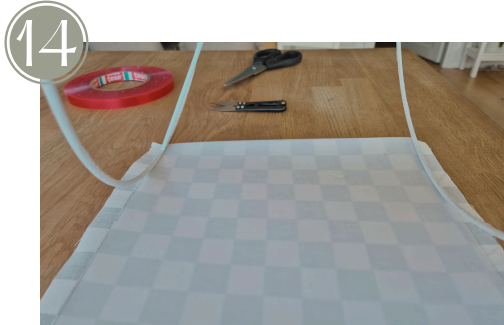
Apply the double-sided tape along the fabric edge as close to the outer edge as possible. Do not peel off the liner just yet.



Use the double-sided tape to cover the entire circumference of both rings (fitted and plain).



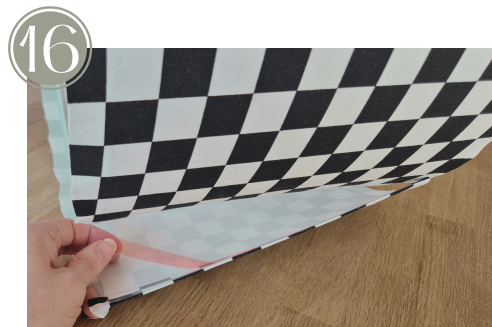
Remove tape liner and then wrap the tape around the rings by pressing evenly edges together. Tape should cover the whole ring. If needed add more tape.



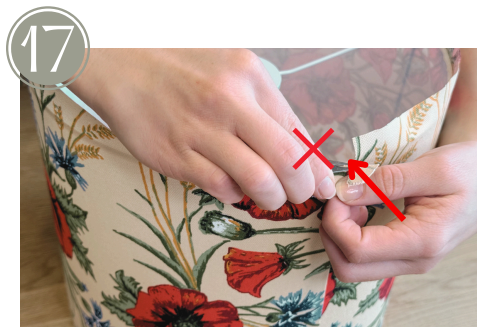
Position the rings at the edge of the PVC panel. Make sure the rings are **on the edge** of PVC panel! The **fitted ring should go on top of the pattern**.



Roll the panel into a cylinder around the rings making sure the rings are aligned on the edge as shown on the picture no. 18(below).



Peel off the **liner** of the tape to expose adhesive, then firmly press the edges together to secure.



Trim the **inner excess fabric** at the overlap to avoid bunching. Repeat on the other side.



Make small cuts (~0.4 inches) into the seam allowance, especially around joints. Do NOT cut until the PVC panel. Repeat on the other side.



Gently press the fabric against the ring. If needed, make additional small cuts so the fabric folds smoothly.



Use wooden **finishing tool** (or any non-sharp tool available) to press and smooth the fabric into the inner edge of the ring. Don't be afraid to use force.



Enjoy your custom lampshade!

